



PLACEWORKS

Creating great places for over 40 years

PlaceWorks is one of California's leading environmental, planning, and design firms, working to inspire, imagine, and create great places for over forty years.

Our environmental services include:

- CEQA/NEPA Compliance
- Air Quality & GHG
- Noise & Vibration
- Risk Assessment
- Visual Simulations
- Hydrology/Water Quality
- Transportation Engineering
- School Facilities Planning
- Environmental Site Assessment
- Shade/Shadow Analysis



Orange County | Bay Area
Sacramento | Central Coast | Los Angeles | Inland Empire

PLACEWORKS.COM

We deliver Sustainable Legacies by integrating resilience, sustainability and equity into everything we do

- Air Quality/GHG Studies
- Biological Resources
- CEQA/NEPA Compliance
- Climate Action/Adaptation Plans
- Coastal Zone Management
- Conservation Planning
- Cultural Resources
- Ecological Restoration
- Environmental Monitoring
- General Plans/Updates
- GIS/Data Management
- Mitigation Planning
- Noise & Vibration Assessment
- Open Space Planning
- Regulatory Compliance/Permitting
- Stakeholder Outreach
- Stormwater Compliance
- Sustainability Plans
- Transportation Planning
- Urban Design + Planning
- Visual Resources
- Water Supply/Quality
- Wetland Ecology
- Wildfire Risk Mitigation

 aecom.com





CEQA/NEPA Cultural Resource Experts Since 1977

Our core services include:

Archaeological and Historical Overviews
Archaeological and Historical Surveys
Archaeological Construction Monitoring
CEQA/NEPA Document Contributions
Constraints Analysis
AB 52 and SB 18 Assistance

San Diego | Central Coast | Central
Valley | Los Angeles | Inland Empire |
Northern California



LSA



**Land Use
Planning**



**Paleontological
Resources**



**Geographical
Information System (GIS)**



Noise



**Biological
Resources**



**Cultural
Resources**



**Transportation
Mobility**



**Climate
Change**



**Environmental
Analysis**



**Air
Quality**



**Water
Quality**

LEADERS IN ENVIRONMENTAL CONSULTING SINCE 1976



• ROSEVILLE • POINT RICHMOND • CLOVIS • SAN LUIS OBISPO
• LOS ANGELES • RIVERSIDE • IRVINE
• PALM SPRINGS • CARLSBAD

(949) 553-0666 • WWW.LSA.NET • MARKETING@LSA.NET

Sound Science. Creative Solutions.®



SWCA

- Environmental Compliance
- Environmental Planning
- Environmental Restoration
- Paleontology
- Archaeology
- CEQA / NEPA
- Wetlands
- Biology

HALF MOON BAY | PASADENA | SACRAMENTO
SAN DIEGO | SAN FRANCISCO | SAN LUIS OBISPO

www.swca.com

An illustration featuring two hands holding megaphones, one on the left and one on the right, pointing towards the center. In the background, there is a stylized cityscape with various buildings and trees.

WE'RE HIRING!

JOIN OUR TEAM

For more information, please visit:
sapphosenvironmental.com/careers

430 N. Halstead St. Pasadena, CA 91107 | Tel: 626.683.3547



- CEQA/NEPA Compliance
- Biological Resources
- Cultural Resources
- Historical Resources
- Landscape Architecture
- Habitat Restoration
- Regulatory Permitting
- Compliance Monitoring
- Acoustics/Noise
- Air Quality/GHG

SAN DIEGO | LOS ANGELES | ORANGE | RIVERSIDE | SACRAMENTO | PLACER

www.helixepi.com

CHAMBERS GROUP

2021 Interdisciplinary Environmental Services

- Environmental Planning & Permitting
- CEQA/NEPA Documentation & Compliance
- Cultural Resources & AB 52 Consultation
- Mitigation Planning, Monitoring, Reporting
- Construction Compliance Monitoring
- Biological Resources
- Paleontological Resources
- Marine & Aquatic Resources
- GIS & UAS
- Habitat Restoration Construction



— CHAMBERSGROUPINC.COM —

Santa Ana San Diego Glendale Riverside El Centro Portland

A L B E R T A .

WEBB

A S S O C I A T E S

Planning & Environmental Services

Est. 1971



www.webbassociates.com



REMY | MOOSE | MANLEY

LLP



Promoting sustainable stewardship of our communities and natural resources by providing strategic and innovative consulting services and solutions

Meridian has expertise in a broad range of services, including:

Mitigation Implementation and Monitoring

Water Supply Assessments and Verifications

Sustainability Planning • Air Quality Studies

CEQA/NEPA Compliance • Land Use Planning

Regulatory Permitting Services • Noise Studies

Public Outreach and Facilitation • GIS Mapping

706 S. Hill Street, 11th Floor
Los Angeles, CA 90014
(213) 335-3434



920 Hampshire Road, Suite A5
Westlake Village, CA 91361
(805) 367-5720



Meridian
Consultants

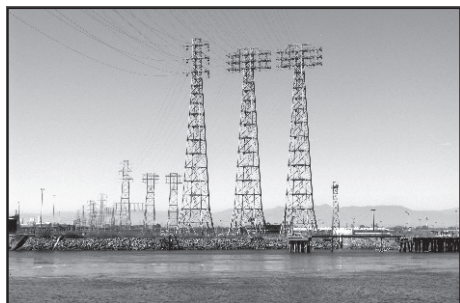


Best Best & Krieger LLP is Honored to Support the Association of Environmental Professionals' Dive into an Ocean of Knowledge



BEST BEST & KRIEGER
ATTORNEYS AT LAW

www.bbklaw.com



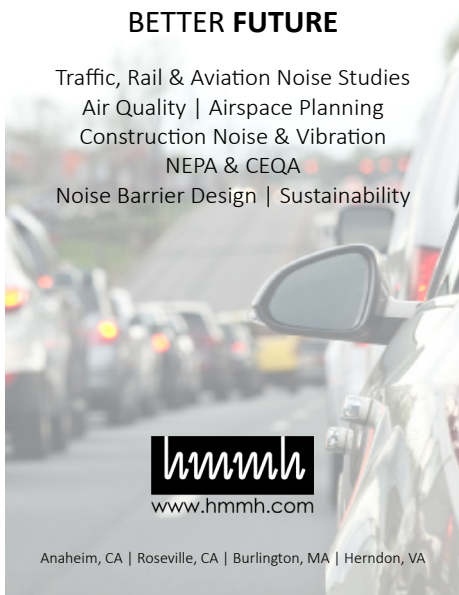
Celebrating 30 years of providing environmental services across the full project life cycle.



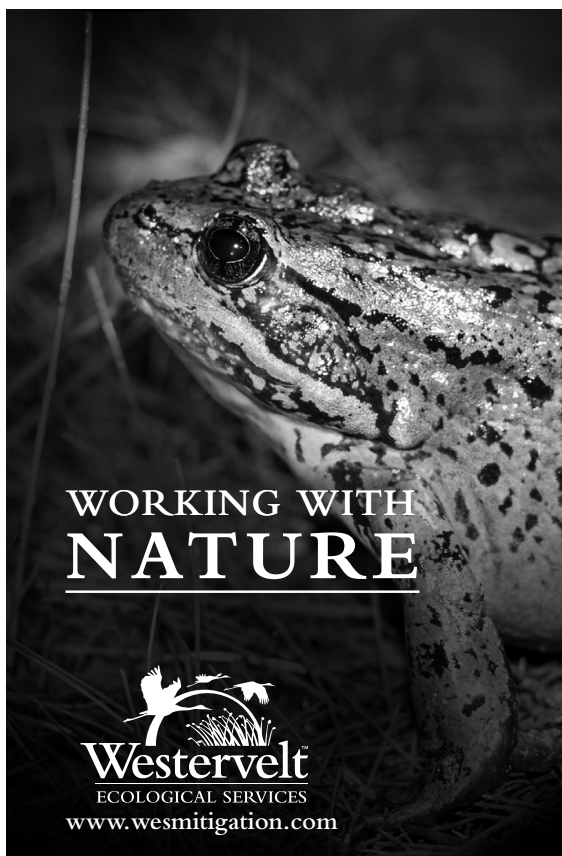
www.aspeneg.com

PROVIDING INNOVATIVE SOLUTIONS FOR A BETTER FUTURE


Traffic, Rail & Aviation Noise Studies
Air Quality | Airspace Planning
Construction Noise & Vibration
NEPA & CEQA
Noise Barrier Design | Sustainability



Anaheim, CA | Roseville, CA | Burlington, MA | Herndon, VA



**WORKING WITH
NATURE**



Westervelt
ECOLOGICAL SERVICES
www.wesmitigation.com



SEQUOIA

Ecological Consulting, Inc.



Visit our booth at the Exhibit Hall. sequoiaeco.com

Walnut Creek | Sacramento | San Diego | Monterey

**REAL-TIME CLOUD-BASED
AIR QUALITY MONITORING**




Jacobs

Challenging today.
Reinventing tomorrow.

Cultivating a sustainable future where
people and the environment thrive.



ENVIRONMENTAL CONSULTANTS
wra-ca.com



Harris & Associates

Municipal Planning + Consulting
Environmental Planning + Compliance
Housing + Community Development
Municipal + District Finance

✉ Diane.Sandman@WeAreHarris.com
✉ William.Halligan@WeAreHarris.com

www.WeAreHarris.com



Your environmental data experts

Visit us at the ERIS' booth!



Angela Johanboeke
Regional Account Manager, CA & HI

erisinfo.com

DUDEK dudek.com | 800.450.1818 | hello@dudek.com

Put our passion to work for you.
DU more.

- Planning & Urban Design
- CEQA/NEPA
- Coastal Zone Planning
- Cultural & Historical Resources Assessment
- Biological Studies
- Fire Protection Planning & Urban Forestry
- Natural Resources Management
- Water Resources Development



RINCON CONSULTANTS, INC.
Environmental Scientists | Planners | Engineers
rinconconsultants.com

Carlsbad | Fresno | Los Angeles | Monterey | Oakland | Redlands
Sacramento | San Diego | San Jose | San Luis Obispo | Santa Barbara | Ventura

ASCENT

ASCENT IS EXPANDING IN
SOUTHERN CALIFORNIA

ascentenvironmental.com/socal

full-service
cultural resources support
from inception to implementation



tfernandez@incontext.co